

# 2017 STATISTICS

For Dig-In Damages



**439k**

U.S. reported damages  
related to dig-ins.



**52%**

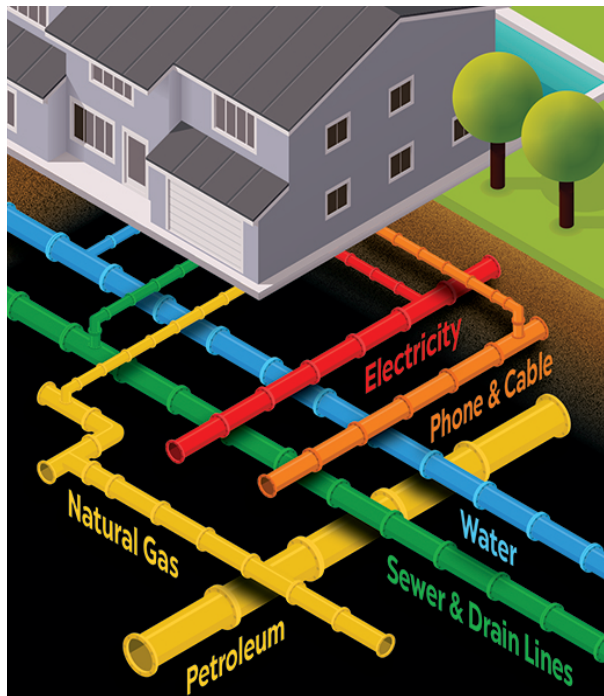
of damages resulted from  
improper excavation practices.



**24%**

of damages resulted from not  
calling 811 before digging.

source: [www.commongroundalliance.com](http://www.commongroundalliance.com)



## Underground Facilities are Everywhere

Know what's below.  
Call **811** before you dig.



**INTERMOUNTAIN<sup>®</sup>**  
GAS COMPANY  
A Subsidiary of MDU Resources Group, Inc.  
*In the Community to Serve<sup>®</sup>*  
[www.intgas.com](http://www.intgas.com)



**INTERMOUNTAIN<sup>®</sup>**  
GAS COMPANY  
A Subsidiary of MDU Resources Group, Inc.  
*In the Community to Serve<sup>®</sup>*  
**DAMAGE PREVENTION  
EDUCATION**



**Call **811** before you dig.**  
**IT'S FREE. IT'S EASY. IT'S THE LAW.**



# DIGGING SAFELY IS A SHARED RESPONSIBILITY

**Intermountain Gas offers FREE  
contractor/excavator training.**

Contact us to schedule your FREE training.

**awareness@igc.com**

**Customer Service/Emergency: 800-548-3679**

Get more information and view a schedule of  
classes at **www.intgas.com/free-training**.

Intermountain Gas is committed to keeping  
you safe by reducing excavation damage to  
underground facilities through education  
and awareness. Always call **811** before  
you dig to get your utility lines located,  
and dig safely using proven excavation  
methods.

Please refer to Idaho's Dig Law for more  
information.



## FOLLOW THESE SIMPLE STEPS

- Call 811 or visit [www.Call811.com](http://www.Call811.com) two business days before you plan to dig to have underground utilities marked for free.
- If you are a subcontractor, protect yourself and your company by calling 811 for a locate ticket. The general contractor's ticket does not apply to anyone except them.
- Outline/mark your planned dig site in white paint.
- Wait for ALL utility lines to be marked before digging.
- Maintain the locate marks throughout the lifetime of the project.
- There is a tolerance zone on either side of the markings. Hand dig to expose and determine the exact location of utilities before proceeding with excavation.
- Use acceptable backfill (such as sand or rock-free dirt) and proper compaction to avoid damage to facilities.
- Stop excavating immediately if you find unmarked gas lines, and call 811 to have them marked.
- If there is a release of natural gas, leave the area and call 911. Then, call Intermountain Gas and keep others clear of the area.
- Call Intermountain Gas to report all hit lines - even if there is no blowing gas. Minor nicks and wrap damage can be dangerous if left unrepaired.
- Never try to fix a damaged natural gas line or try to restrict the gas flow in any way.

## UTILITY COLOR CODES

**All utilities will mark the location and path  
of their underground facilities using the  
following colors:**

**WHITE:** Proposed Excavation

**FLUORESCENT PINK:** Temporary  
Survey Markings

**RED:** Electric Power Lines, Cables,  
Conduit and Lighting Cables

**YELLOW:** Gas, Oil, Steam, Petroleum  
or Gaseous Materials

**ORANGE:** Communication, Alarm or  
Signal Lines, Cables or Conduit

**BLUE:** Potable Water

**PURPLE:** Reclaimed Water, Irrigation  
and Slurry Lines

**GREEN:** Sewers and Drain Lines